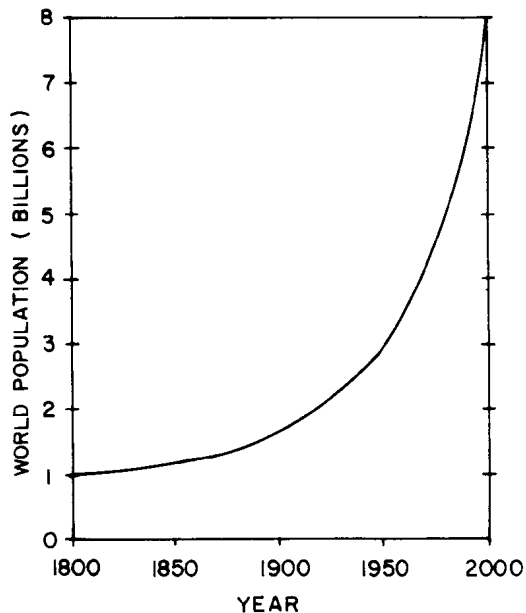
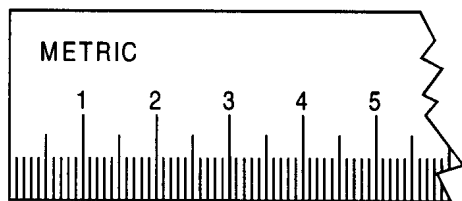


1. The graph below shows world population beginning in the year 1800 and projected to the year 2000.



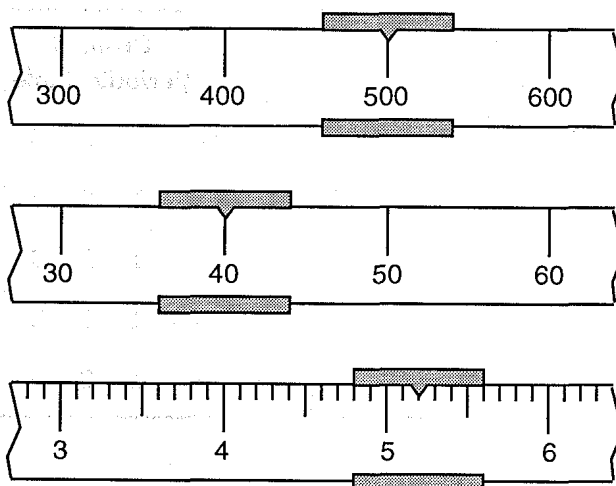
The graph shows the greatest increase in population between

- A) 1825 and 1850 B) 1875 and 1900
 C) 1925 and 1950 D) 1975 and 2000
2. A student used the ruler shown above to measure the side of a square block. She recorded the length as 4.325 cm. What is wrong with her answer?



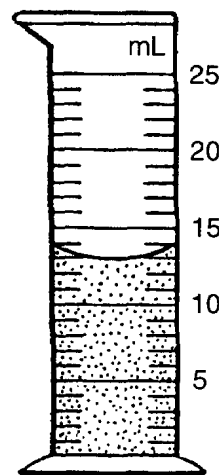
- A) She should have measured all sides of the block.
 B) She placed the decimal in the wrong place.
 C) She should have squared the answer to determine the correct length.
 D) Her ruler did not allow measurement as precise as 4.325 cm.

3. The diagram below represents a portion of a triple-beam balance.



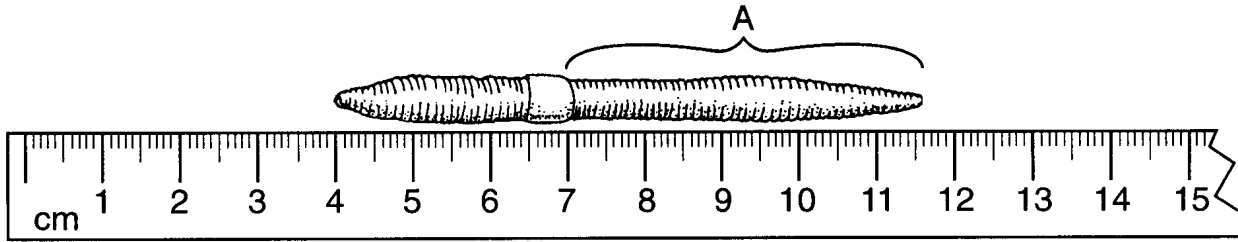
If the beams are in balance with the riders in the positions shown, what is the total mass of the object?

- A) 540.20 g B) 540.52 g
 C) 545.20 g D) 545.52 g
4. What is the volume of water in the graduated cylinder shown below?



- A) 10.3 mL B) 13.0 mL
 C) 13.5 mL D) 14.0 mL

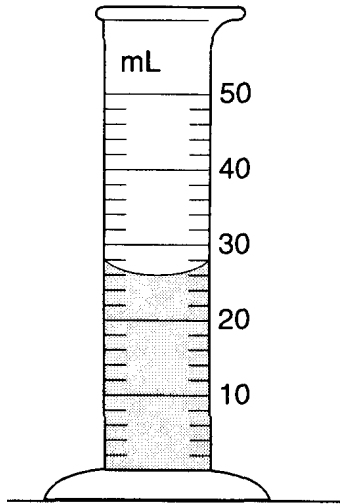
5. A student measured an earthworm using a metric ruler, as shown in the diagram below.



What is the length of *only* section A? (Note: Answers have different units)

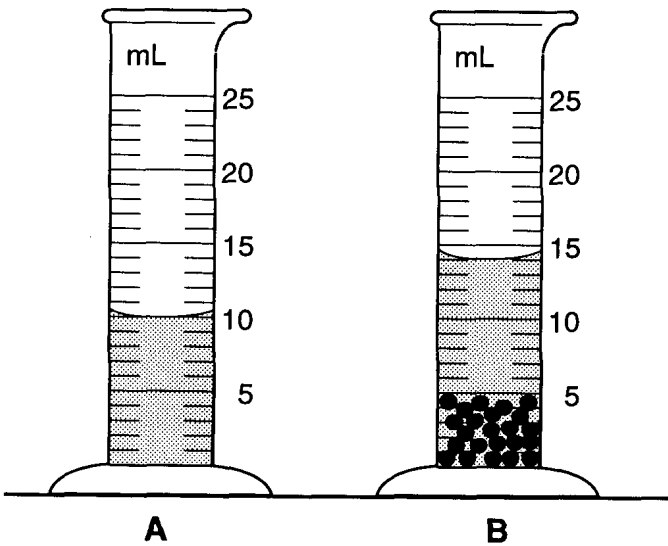
- A) 7.6 cm B) 11.6 cm C) 4.5 cm D) 23 mm

6. What is the volume of the liquid indicated in the diagram below of a graduated cylinder?



- A) 23 ml B) 26 ml C) 27 ml D) 28 ml

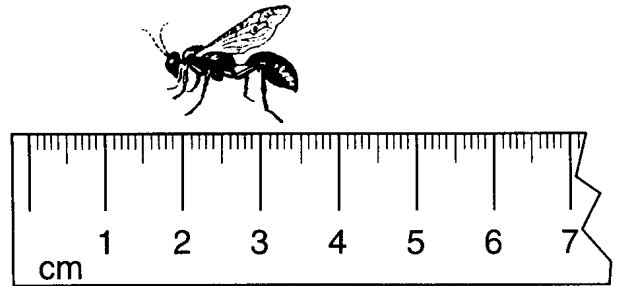
7. A graduated cylinder containing water is shown in diagram A below. Pea seeds were dropped into the cylinder and the results are shown in diagram B.



What is the volume of water displaced by the seeds?

- A) 15 ml B) 14 ml C) 5 ml D) 4 ml

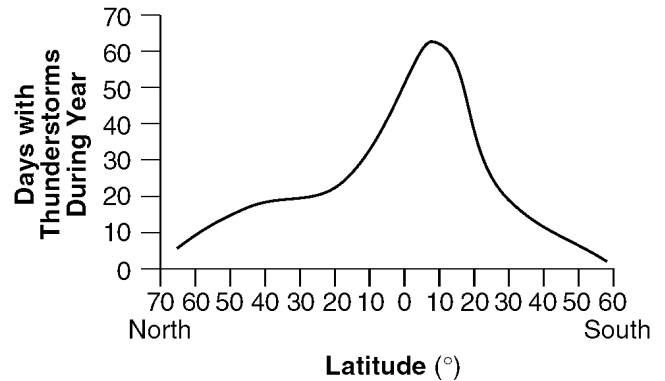
8. The diagram below shows a wasp positioned next to a centimeter ruler.



What is the approximate length of a wing of this wasp?

- A) 1.0 mm B) 1.4 cm
C) 3.5 cm D) 35 mm

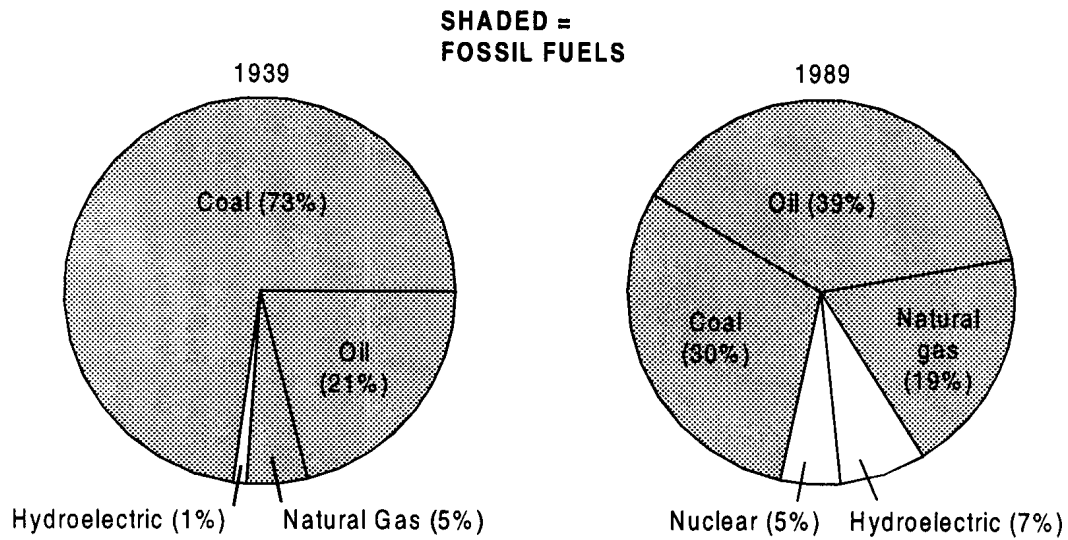
9. The graph below shows the average number of days each year that thunderstorms occur at different latitudes on Earth.



According to the graph, what is the approximate number of days each year that thunderstorms occur at 40°N latitude?

- A) 8 days B) 18 days
C) 24 days D) 32 days

10. Base your answer to the following question on According to the pie charts above, which statement is *true*?



- A) In 1939 a greater percentage of energy was obtained from hydroelectric dams than in 1989.
- B) Fossil fuels made up a greater percentage of total energy use in 1939 than in 1989.
- C) Coal represented a larger percentage of the total energy use in 1989 than in 1939.
- D) The percentage of natural gas used has decreased over time.